



# The Rural Report

REAL ESTATE NEWS AND VIEWS FROM DON MYERS  
AND THE RE/MAX CENTRE REALTY FARM AND RURAL  
LIFESTYLE DIVISION

---

## HOW TO SURVIVE WINTER

Each of us has a favorite time of year—and a least favorite. In casual conversations, significantly more people say spring or summer is their favorite, followed by fall. It seems that more people dislike winter. Here is a guide to help you through even the most bitter winter and be prepared from start to finish for next year.

1. Don't let winter sneak up on you. The first signal that something is changing comes in August. Yes, August. By the time Ag Progress Days arrives, the sun already sets 30 minutes sooner than on the 4th of July. 😞 Look to the far west and you'll see the front line of winter way off in the distance.
2. By the end of August, many people's minds turn to the college football season. You wonder: Will your team win the conference? Go undefeated? Become national champions? You most likely enjoy shirt-sleeve weather for the first few games in September, but before the regular season ends, you've probably seen snowflakes. That isn't nice!
3. By October 15, things are looking more dreary. The sun is getting lazy, going to bed more than two hours earlier than on the 4th of July. Chilly breezes begin coming in from the northwest. The sun is even sleeping in every morning. The first killing frosts and freezes arrive.
4. Now it's November. Many trees have lost their leaves. Darkness arrives an hour early each day. The mountains are bleak and brown. But Christmas lights begin to appear, and Thanksgiving gatherings are planned and celebrated. The front line of winter is near.
5. While the calendar says winter runs from December 21 to March 21, meteorologists will tell you that "real" winter is December 5 to March 5—the coldest three-month period of average temperatures. That means when the calendar says December 21 is the first day of winter, we're already two weeks into it!
6. A brand-new year arrives. But now things start turning for the better. The PA Farm Show comes and goes by mid-January. And behold—we've already gained 21 minutes of daylight by January 15. By the end of January we have passed the low point of the temperature curve for meteorological winter.
7. February brings Groundhog Day. As a farmer, I've always wondered why God felt He needed to create them. Then comes Valentine's Day—and we've added another 37 minutes of daylight between the Farm Show and Valentine's Day.
8. And finally, March 5—the end of meteorological winter. Then March 21, the Spring Equinox. We made it! We're on a roll. We've pushed the front line of winter way, way back.

Now you can walk the land, see the views, and purchase the perfect property for your needs. We would be pleased to be of service to you.



## UPCOMING EVENTS IN CENTRE COUNTY

### Valentine's Goat Social

February 12 @ 6:30 pm

Grab your favorite Valentine, Galentine, kiddo (age 8+), or come solo and join us at the farm for our annual Valentine's Goat Social! This is all about snuggling sweet baby goats!

### Art, Taste, and the Senses: An Arboretum & Palmer Valentine's Day

February 14 @ 12:00 pm

The Arboretum at Penn State and the Palmer Museum of Art invite you to celebrate Valentine's Day with a creative and sensory-rich afternoon entirely hosted inside the Palmer. Enjoy a variety of experiences throughout the day, including a free drop-in gallery tour at noon to explore art through the five senses. Free make-and-take Valentine crafts will be available from noon to 4 p.m. A paid, sign-up-required, guided chocolate-tasting experience will also take place in the Palmer Event Space at 1 p.m. Come and enjoy an afternoon of art, flavor, and creativity in a unique Valentine's celebration. Space is limited for the chocolate tasting; register here: <https://arboretum.psu.edu/events/the-art-of-chocolate-a-guided-tasting-experience/#registration>

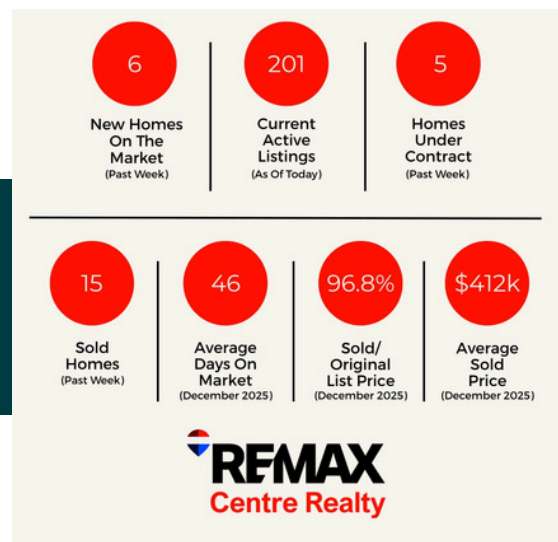
### Hand Lettering Bootcamp (At The Makery)

February 19 @ 6:30 pm

Go from a lettering newbie to an expert in three sessions during Hand Lettering Boot Camp!

## CENTRE COUNTY MARKET UPDATE

Effective date: February 1, 2026





## REAL ESTATE NEWS



### 8 TIPS FOR SELLING YOUR HOME IN WINTER

Selling in winter can still be successful by boosting curb appeal, ensuring safety, maximizing light, and creating a warm, inviting atmosphere for buyers. The National Association of Realtors shares eight practical tips to help sellers stand out and attract strong offers during the slower season.

To read full article [click here](#).



### PA NAMED 12<sup>TH</sup> BEST STATE TO RAISE A FAMILY

Pennsylvania was ranked the 12th best state in the U.S. to raise a family in the latest WalletHub study, scoring especially well for family-friendly activities and relative affordability compared with other states.

To read full article [click here](#).



### ONLY 33% OF HOMEOWNERS PROTECTED AGAINST EXTREME WEATHER IN 2024

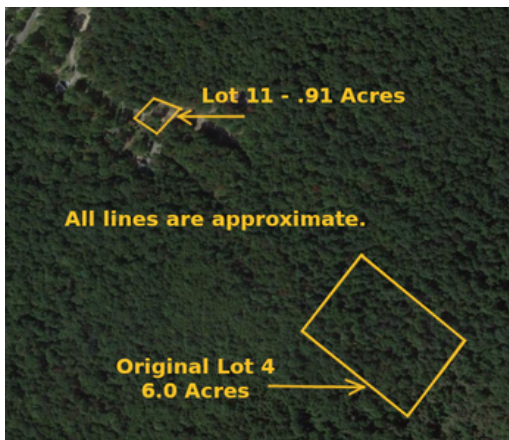
Pennsylvania Association of Realtors reports that although 84 % of homeowners faced weather-related challenges in 2024, only about one-third took steps like home improvements or updated insurance to protect against extreme weather, with just 15 % purchasing additional coverage.

To read full article [click here](#).



# For Sale!

## WOODED LOTS NEAR LAKE RAYSTOWN



Discover the rare opportunity to own a private wooded estate nestled in the heart of central Pennsylvania's most sought-after outdoor destination. This unique tract of land sits within a selectively managed cabin community, designed to preserve privacy, aesthetics, and long-term property value.

Set within one of the Mid-Atlantic's premier Dark Skies regions, this property offers a

rare opportunity to experience uninterrupted views of the night sky, where the Milky Way is visible to the naked eye. Whether you're an astrophotographer or simply love peaceful evenings under the stars, this is your place to escape.

Lot 4 - 6 Acres - PRICE REDUCTION

Lot 11 - .91 Acres - **SOLD**

## Feedback

Let us know what you would like to see in future newsletters. [Click here](#) to give us your ideas.



[WWW.CENTRALPARURALPROPERTY.COM](http://WWW.CENTRALPARURALPROPERTY.COM)



To unsubscribe from the Rural Report, please email [bphillipsid@gmail.com](mailto:bphillipsid@gmail.com).