



United States
Department of
Agriculture

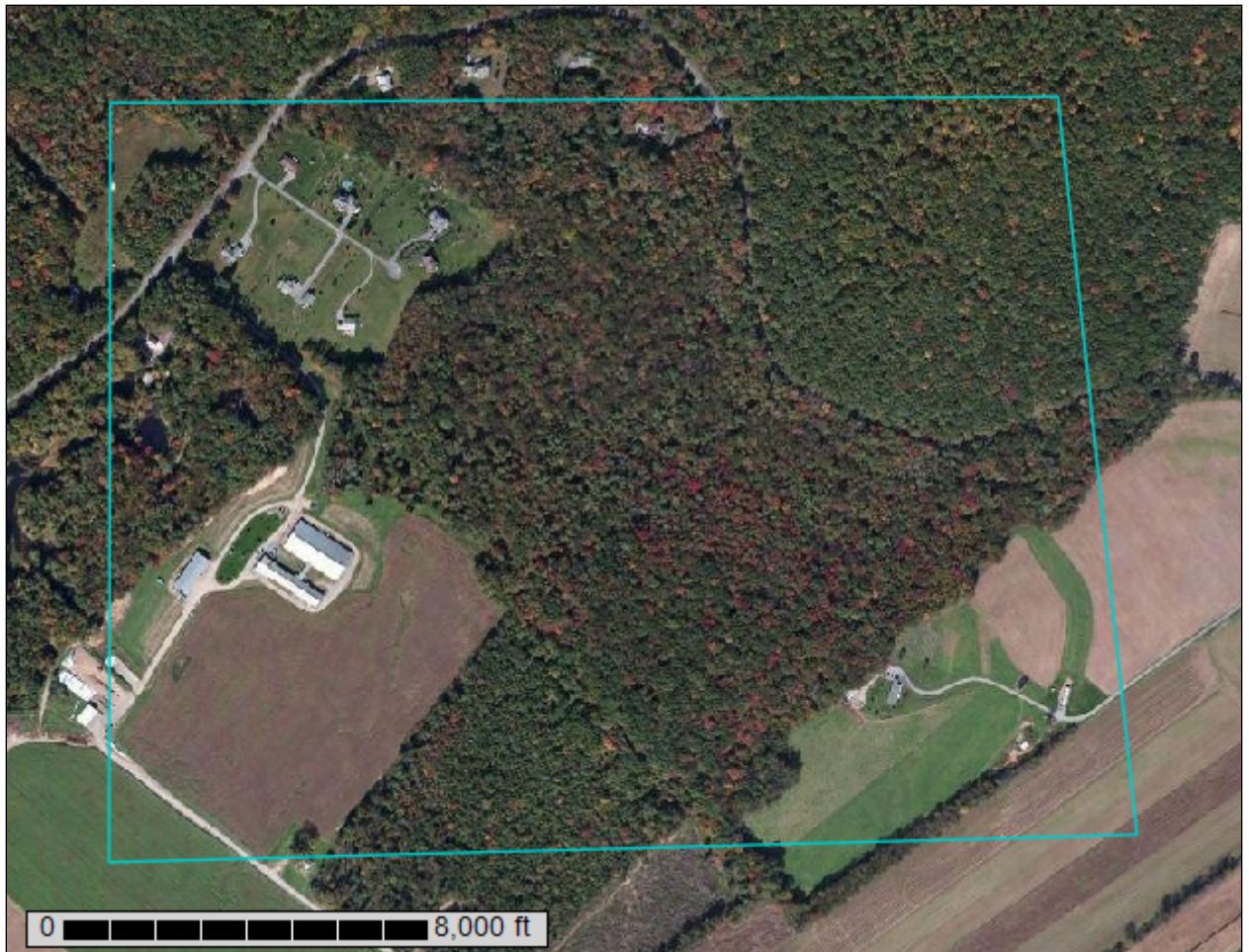
NRCS

Natural
Resources
Conservation
Service

A product of the National
Cooperative Soil Survey,
a joint effort of the United
States Department of
Agriculture and other
Federal agencies, State
agencies including the
Agricultural Experiment
Stations, and local
participants

Custom Soil Resource Report for Huntingdon County, Pennsylvania

McCauley Land Soils



May 6, 2014

Preface

Soil surveys contain information that affects land use planning in survey areas. They highlight soil limitations that affect various land uses and provide information about the properties of the soils in the survey areas. Soil surveys are designed for many different users, including farmers, ranchers, foresters, agronomists, urban planners, community officials, engineers, developers, builders, and home buyers. Also, conservationists, teachers, students, and specialists in recreation, waste disposal, and pollution control can use the surveys to help them understand, protect, or enhance the environment.

Various land use regulations of Federal, State, and local governments may impose special restrictions on land use or land treatment. Soil surveys identify soil properties that are used in making various land use or land treatment decisions. The information is intended to help the land users identify and reduce the effects of soil limitations on various land uses. The landowner or user is responsible for identifying and complying with existing laws and regulations.

Although soil survey information can be used for general farm, local, and wider area planning, onsite investigation is needed to supplement this information in some cases. Examples include soil quality assessments (<http://www.nrcs.usda.gov/wps/portal/nrcs/main/soils/health/>) and certain conservation and engineering applications. For more detailed information, contact your local USDA Service Center (<http://offices.sc.egov.usda.gov/locator/app?agency=nrcs>) or your NRCS State Soil Scientist (http://www.nrcs.usda.gov/wps/portal/nrcs/detail/soils/contactus/?cid=nrcs142p2_053951).

Great differences in soil properties can occur within short distances. Some soils are seasonally wet or subject to flooding. Some are too unstable to be used as a foundation for buildings or roads. Clayey or wet soils are poorly suited to use as septic tank absorption fields. A high water table makes a soil poorly suited to basements or underground installations.

The National Cooperative Soil Survey is a joint effort of the United States Department of Agriculture and other Federal agencies, State agencies including the Agricultural Experiment Stations, and local agencies. The Natural Resources Conservation Service (NRCS) has leadership for the Federal part of the National Cooperative Soil Survey.

Information about soils is updated periodically. Updated information is available through the NRCS Web Soil Survey, the site for official soil survey information.

The U.S. Department of Agriculture (USDA) prohibits discrimination in all its programs and activities on the basis of race, color, national origin, age, disability, and where applicable, sex, marital status, familial status, parental status, religion, sexual orientation, genetic information, political beliefs, reprisal, or because all or a part of an individual's income is derived from any public assistance program. (Not all prohibited bases apply to all programs.) Persons with disabilities who require alternative means

for communication of program information (Braille, large print, audiotape, etc.) should contact USDA's TARGET Center at (202) 720-2600 (voice and TDD). To file a complaint of discrimination, write to USDA, Director, Office of Civil Rights, 1400 Independence Avenue, S.W., Washington, D.C. 20250-9410 or call (800) 795-3272 (voice) or (202) 720-6382 (TDD). USDA is an equal opportunity provider and employer.

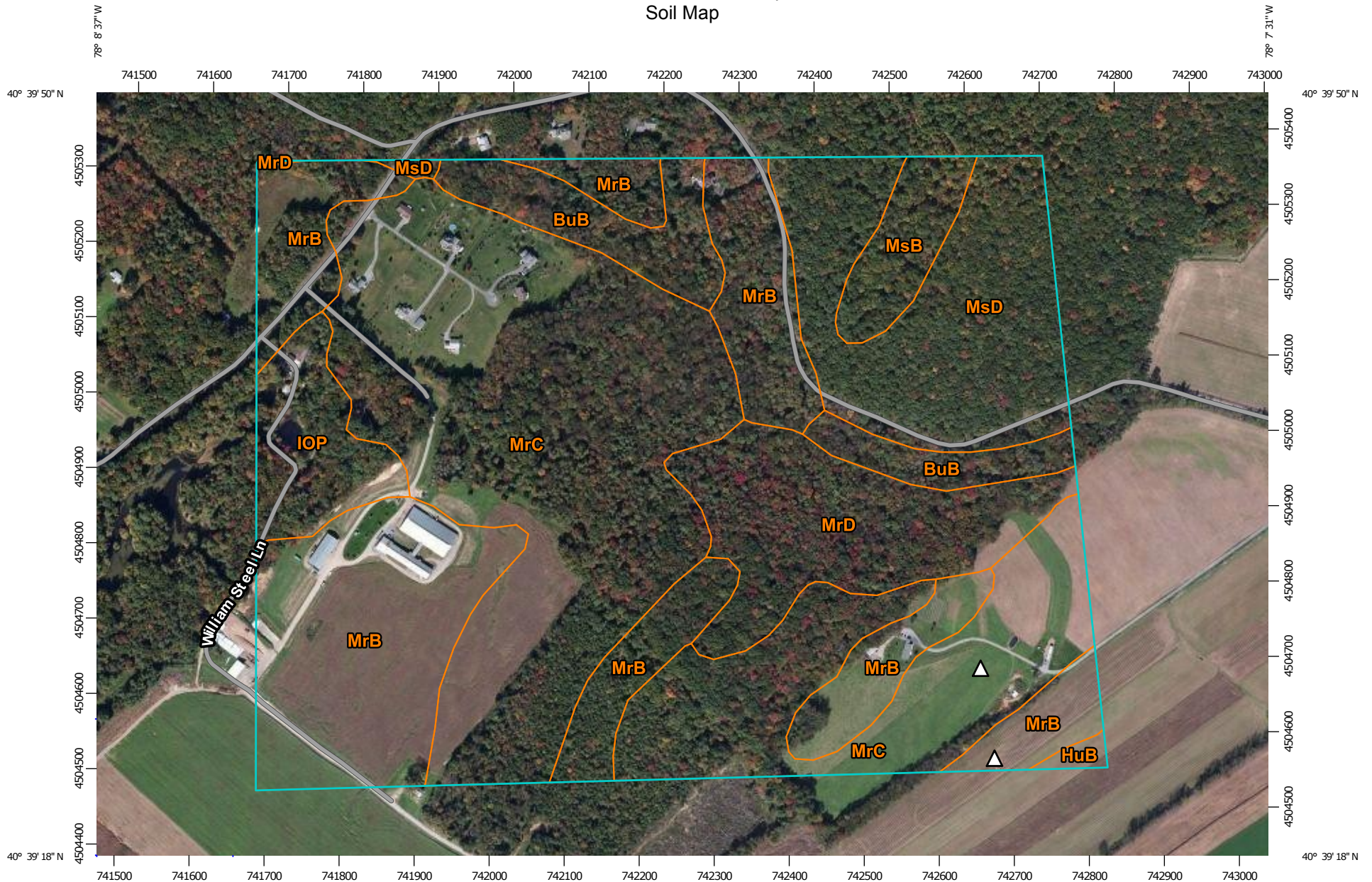
Contents

Preface	2
Soil Map	5
Soil Map.....	6
Legend.....	7
Map Unit Legend.....	8
Map Unit Descriptions.....	8
Huntingdon County, Pennsylvania.....	10
BuB—Buchanan gravelly loam, 3 to 8 percent slopes.....	10
HuB—Hublersburg silt loam, 2 to 8 percent slopes.....	11
IOP—Iron ore pits. abandoned.....	12
MrB—Morrison sandy loam, 2 to 8 percent slopes.....	12
MrC—Morrison sandy loam, 8 to 15 percent slopes.....	13
MrD—Morrison sandy loam, 15 to 25 percent slopes.....	14
MsB—Morrison very stony sandy loam, 2 to 8 percent slopes.....	15
MsD—Morrison very stony sandy loam, 8 to 25 percent slopes.....	17

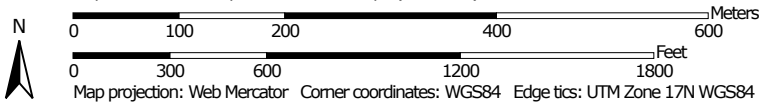
Soil Map

The soil map section includes the soil map for the defined area of interest, a list of soil map units on the map and extent of each map unit, and cartographic symbols displayed on the map. Also presented are various metadata about data used to produce the map, and a description of each soil map unit.

Custom Soil Resource Report Soil Map




Map Scale: 1:7,140 if printed on A landscape (11" x 8.5") sheet.




MAP LEGEND

Area of Interest (AOI)

 Area of Interest (AOI)


Soils


 Soil Map Unit Polygons


 Soil Map Unit Lines


 Soil Map Unit Points

Special Point Features

 Blowout

 Borrow Pit


 Clay Spot

 Closed Depression

 Gravel Pit

 Gravelly Spot


 Landfill

 Lava Flow

 Marsh or swamp

 Mine or Quarry

 Miscellaneous Water


 Perennial Water

 Rock Outcrop


 Saline Spot

 Sandy Spot

 Severely Eroded Spot


 Sinkhole


 Slide or Slip

 Sodic Spot

 Spoil Area

 Stony Spot


 Very Stony Spot

 Wet Spot

 Other

 Special Line Features

Water Features

 Streams and Canals


Transportation

 Rails


 Interstate Highways

 US Routes

 Major Roads

 Local Roads

Background

 Aerial Photography

MAP INFORMATION

The soil surveys that comprise your AOI were mapped at 1:20,000.

Warning: Soil Map may not be valid at this scale.

Enlargement of maps beyond the scale of mapping can cause misunderstanding of the detail of mapping and accuracy of soil line placement. The maps do not show the small areas of contrasting soils that could have been shown at a more detailed scale.

Please rely on the bar scale on each map sheet for map measurements.

Source of Map: Natural Resources Conservation Service
 Web Soil Survey URL: <http://websoilsurvey.nrcs.usda.gov>
 Coordinate System: Web Mercator (EPSG:3857)

Maps from the Web Soil Survey are based on the Web Mercator projection, which preserves direction and shape but distorts distance and area. A projection that preserves area, such as the Albers equal-area conic projection, should be used if more accurate calculations of distance or area are required.

This product is generated from the USDA-NRCS certified data as of the version date(s) listed below.

Soil Survey Area: Huntingdon County, Pennsylvania
 Survey Area Data: Version 5, Dec 16, 2013

Soil map units are labeled (as space allows) for map scales 1:50,000 or larger.

Date(s) aerial images were photographed: Oct 6, 2011—Oct 17, 2011

The orthophoto or other base map on which the soil lines were compiled and digitized probably differs from the background imagery displayed on these maps. As a result, some minor shifting of map unit boundaries may be evident.

Map Unit Legend

Huntingdon County, Pennsylvania (PA061)			
Map Unit Symbol	Map Unit Name	Acres in AOI	Percent of AOI
BuB	Buchanan gravelly loam, 3 to 8 percent slopes	12.3	5.5%
HuB	Hublersburg silt loam, 2 to 8 percent slopes	0.7	0.3%
IOP	Iron ore pits. abandoned	9.0	4.0%
MrB	Morrison sandy loam, 2 to 8 percent slopes	58.4	26.2%
MrC	Morrison sandy loam, 8 to 15 percent slopes	90.1	40.4%
MrD	Morrison sandy loam, 15 to 25 percent slopes	20.1	9.0%
MsB	Morrison very stony sandy loam, 2 to 8 percent slopes	5.7	2.6%
MsD	Morrison very stony sandy loam, 8 to 25 percent slopes	27.0	12.1%
Totals for Area of Interest		223.1	100.0%

Map Unit Descriptions

The map units delineated on the detailed soil maps in a soil survey represent the soils or miscellaneous areas in the survey area. The map unit descriptions, along with the maps, can be used to determine the composition and properties of a unit.

A map unit delineation on a soil map represents an area dominated by one or more major kinds of soil or miscellaneous areas. A map unit is identified and named according to the taxonomic classification of the dominant soils. Within a taxonomic class there are precisely defined limits for the properties of the soils. On the landscape, however, the soils are natural phenomena, and they have the characteristic variability of all natural phenomena. Thus, the range of some observed properties may extend beyond the limits defined for a taxonomic class. Areas of soils of a single taxonomic class rarely, if ever, can be mapped without including areas of other taxonomic classes. Consequently, every map unit is made up of the soils or miscellaneous areas for which it is named and some minor components that belong to taxonomic classes other than those of the major soils.

Most minor soils have properties similar to those of the dominant soil or soils in the map unit, and thus they do not affect use and management. These are called noncontrasting, or similar, components. They may or may not be mentioned in a particular map unit description. Other minor components, however, have properties and behavioral characteristics divergent enough to affect use or to require different management. These are called contrasting, or dissimilar, components. They generally are in small areas and could not be mapped separately because of the scale used. Some small areas of strongly contrasting soils or miscellaneous areas are identified by a special symbol on the maps. If included in the database for a given area, the

Custom Soil Resource Report

contrasting minor components are identified in the map unit descriptions along with some characteristics of each. A few areas of minor components may not have been observed, and consequently they are not mentioned in the descriptions, especially where the pattern was so complex that it was impractical to make enough observations to identify all the soils and miscellaneous areas on the landscape.

The presence of minor components in a map unit in no way diminishes the usefulness or accuracy of the data. The objective of mapping is not to delineate pure taxonomic classes but rather to separate the landscape into landforms or landform segments that have similar use and management requirements. The delineation of such segments on the map provides sufficient information for the development of resource plans. If intensive use of small areas is planned, however, onsite investigation is needed to define and locate the soils and miscellaneous areas.

An identifying symbol precedes the map unit name in the map unit descriptions. Each description includes general facts about the unit and gives important soil properties and qualities.

Soils that have profiles that are almost alike make up a *soil series*. Except for differences in texture of the surface layer, all the soils of a series have major horizons that are similar in composition, thickness, and arrangement.

Soils of one series can differ in texture of the surface layer, slope, stoniness, salinity, degree of erosion, and other characteristics that affect their use. On the basis of such differences, a soil series is divided into *soil phases*. Most of the areas shown on the detailed soil maps are phases of soil series. The name of a soil phase commonly indicates a feature that affects use or management. For example, Alpha silt loam, 0 to 2 percent slopes, is a phase of the Alpha series.

Some map units are made up of two or more major soils or miscellaneous areas. These map units are complexes, associations, or undifferentiated groups.

A *complex* consists of two or more soils or miscellaneous areas in such an intricate pattern or in such small areas that they cannot be shown separately on the maps. The pattern and proportion of the soils or miscellaneous areas are somewhat similar in all areas. Alpha-Beta complex, 0 to 6 percent slopes, is an example.

An *association* is made up of two or more geographically associated soils or miscellaneous areas that are shown as one unit on the maps. Because of present or anticipated uses of the map units in the survey area, it was not considered practical or necessary to map the soils or miscellaneous areas separately. The pattern and relative proportion of the soils or miscellaneous areas are somewhat similar. Alpha-Beta association, 0 to 2 percent slopes, is an example.

An *undifferentiated group* is made up of two or more soils or miscellaneous areas that could be mapped individually but are mapped as one unit because similar interpretations can be made for use and management. The pattern and proportion of the soils or miscellaneous areas in a mapped area are not uniform. An area can be made up of only one of the major soils or miscellaneous areas, or it can be made up of all of them. Alpha and Beta soils, 0 to 2 percent slopes, is an example.

Some surveys include *miscellaneous areas*. Such areas have little or no soil material and support little or no vegetation. Rock outcrop is an example.

Huntingdon County, Pennsylvania

BuB—Buchanan gravelly loam, 3 to 8 percent slopes

Map Unit Setting

Elevation: 400 to 3,800 feet

Mean annual precipitation: 34 to 60 inches

Mean annual air temperature: 46 to 59 degrees F

Frost-free period: 110 to 180 days

Map Unit Composition

Buchanan and similar soils: 75 percent

Minor components: 25 percent

Description of Buchanan

Setting

Landform: Mountain slopes, valley sides

Landform position (two-dimensional): Footslope

Landform position (three-dimensional): Lower third of mountain flank

Down-slope shape: Concave, linear

Across-slope shape: Linear, concave

Parent material: Colluvium derived from sandstone and shale

Properties and qualities

Slope: 3 to 8 percent

Depth to restrictive feature: 20 to 36 inches to fragipan; 60 to 99 inches to lithic bedrock

Drainage class: Moderately well drained

Capacity of the most limiting layer to transmit water (Ksat): Moderately low to moderately high (0.06 to 0.20 in/hr)

Depth to water table: About 14 to 30 inches

Frequency of flooding: None

Frequency of ponding: None

Available water capacity: Very low (about 2.9 inches)

Interpretive groups

Farmland classification: All areas are prime farmland

Land capability (nonirrigated): 2e

Hydrologic Soil Group: C

Typical profile

0 to 7 inches: Gravelly loam

7 to 21 inches: Gravelly loam

21 to 65 inches: Cobbly clay loam

Minor Components

Wharton

Percent of map unit: 10 percent

Landform: Hills

Landform position (two-dimensional): Backslope

Landform position (three-dimensional): Interfluvial, side slope, head slope

Down-slope shape: Concave

Across-slope shape: Concave

Custom Soil Resource Report

Andover

Percent of map unit: 10 percent

Landform: Depressions

Landform position (two-dimensional): Foothlope, toeslope

Landform position (three-dimensional): Base slope

Down-slope shape: Concave

Across-slope shape: Concave

Laidig

Percent of map unit: 5 percent

Landform: Mountains

Landform position (two-dimensional): Foothlope

Landform position (three-dimensional): Lower third of mountainflank

Down-slope shape: Concave

Across-slope shape: Concave

HuB—Hublersburg silt loam, 2 to 8 percent slopes

Map Unit Setting

Elevation: 310 to 3,000 feet

Mean annual precipitation: 30 to 50 inches

Mean annual air temperature: 45 to 57 degrees F

Frost-free period: 120 to 205 days

Map Unit Composition

Hublersburg and similar soils: 90 percent

Minor components: 10 percent

Description of Hublersburg

Setting

Landform: Valleys

Landform position (two-dimensional): Summit

Landform position (three-dimensional): Side slope

Down-slope shape: Linear

Across-slope shape: Linear

Properties and qualities

Slope: 3 to 8 percent

Depth to restrictive feature: 60 to 99 inches to lithic bedrock

Drainage class: Well drained

Capacity of the most limiting layer to transmit water (Ksat): Moderately high to high
(0.60 to 2.00 in/hr)

Depth to water table: More than 80 inches

Frequency of flooding: None

Frequency of ponding: None

Available water capacity: Moderate (about 8.7 inches)

Interpretive groups

Farmland classification: All areas are prime farmland

Custom Soil Resource Report

Land capability (nonirrigated): 2e
Hydrologic Soil Group: B

Typical profile

0 to 9 inches: Silt loam
9 to 70 inches: Silty clay

Minor Components

Nolin

Percent of map unit: 5 percent

Opequeon

Percent of map unit: 5 percent

IOP—Iron ore pits. abandoned

Map Unit Setting

Mean annual precipitation: 36 to 46 inches
Mean annual air temperature: 44 to 57 degrees F
Frost-free period: 130 to 180 days

Map Unit Composition

Pits, abandoned iron ore: 100 percent

MrB—Morrison sandy loam, 2 to 8 percent slopes

Map Unit Setting

Elevation: 600 to 1,800 feet
Mean annual precipitation: 35 to 50 inches
Mean annual air temperature: 46 to 55 degrees F
Frost-free period: 120 to 180 days

Map Unit Composition

Morrison and similar soils: 90 percent
Minor components: 10 percent

Description of Morrison

Setting

Landform: Ridges
Landform position (two-dimensional): Backslope, summit
Landform position (three-dimensional): Crest, side slope
Down-slope shape: Linear
Across-slope shape: Linear
Parent material: Residuum weathered from limestone and sandstone

Properties and qualities

Slope: 2 to 8 percent

Custom Soil Resource Report

Depth to restrictive feature: 72 to 99 inches to lithic bedrock
Drainage class: Well drained
Capacity of the most limiting layer to transmit water (Ksat): Moderately high to high
(0.60 to 6.00 in/hr)
Depth to water table: More than 80 inches
Frequency of flooding: None
Frequency of ponding: None
Available water capacity: Moderate (about 6.4 inches)

Interpretive groups

Farmland classification: All areas are prime farmland
Land capability (nonirrigated): 2e
Hydrologic Soil Group: B

Typical profile

0 to 14 inches: Sandy loam
14 to 53 inches: Sandy loam
53 to 74 inches: Channery sandy loam

Minor Components

Vanderlip

Percent of map unit: 5 percent
Landform: Ridges
Landform position (two-dimensional): Summit, shoulder
Landform position (three-dimensional): Mountaintop, side slope
Down-slope shape: Convex
Across-slope shape: Convex

Murrill

Percent of map unit: 5 percent

MrC—Morrison sandy loam, 8 to 15 percent slopes

Map Unit Setting

Elevation: 600 to 1,800 feet
Mean annual precipitation: 35 to 50 inches
Mean annual air temperature: 46 to 55 degrees F
Frost-free period: 120 to 180 days

Map Unit Composition

Morrison and similar soils: 90 percent
Minor components: 10 percent

Description of Morrison

Setting

Landform: Ridges
Landform position (two-dimensional): Backslope, summit
Landform position (three-dimensional): Crest, side slope
Down-slope shape: Linear

Custom Soil Resource Report

Across-slope shape: Linear

Parent material: Residuum weathered from limestone and sandstone

Properties and qualities

Slope: 8 to 15 percent

Depth to restrictive feature: 72 to 99 inches to lithic bedrock

Drainage class: Well drained

Capacity of the most limiting layer to transmit water (Ksat): Moderately high to high
(0.60 to 6.00 in/hr)

Depth to water table: More than 80 inches

Frequency of flooding: None

Frequency of ponding: None

Available water capacity: Moderate (about 6.4 inches)

Interpretive groups

Farmland classification: Farmland of statewide importance

Land capability (nonirrigated): 3e

Hydrologic Soil Group: B

Typical profile

0 to 14 inches: Sandy loam

14 to 53 inches: Sandy loam

53 to 74 inches: Channery sandy loam

Minor Components

Vanderlip

Percent of map unit: 5 percent

Landform: Ridges

Landform position (two-dimensional): Summit, shoulder

Landform position (three-dimensional): Mountaintop, side slope

Down-slope shape: Convex

Across-slope shape: Convex

Murrill

Percent of map unit: 5 percent

MrD—Morrison sandy loam, 15 to 25 percent slopes

Map Unit Setting

Elevation: 600 to 1,800 feet

Mean annual precipitation: 35 to 50 inches

Mean annual air temperature: 46 to 55 degrees F

Frost-free period: 120 to 180 days

Map Unit Composition

Morrison and similar soils: 90 percent

Minor components: 10 percent

Description of Morrison

Setting

Landform: Ridges

Landform position (two-dimensional): Backslope

Landform position (three-dimensional): Crest, side slope

Down-slope shape: Linear

Across-slope shape: Linear

Parent material: Residuum weathered from limestone and sandstone

Properties and qualities

Slope: 15 to 25 percent

Depth to restrictive feature: 72 to 99 inches to lithic bedrock

Drainage class: Well drained

Capacity of the most limiting layer to transmit water (Ksat): Moderately high to high
(0.60 to 6.00 in/hr)

Depth to water table: More than 80 inches

Frequency of flooding: None

Frequency of ponding: None

Available water capacity: Moderate (about 6.4 inches)

Interpretive groups

Farmland classification: Not prime farmland

Land capability (nonirrigated): 4e

Hydrologic Soil Group: B

Typical profile

0 to 14 inches: Sandy loam

14 to 53 inches: Sandy loam

53 to 74 inches: Channery sandy loam

Minor Components

Vanderlip

Percent of map unit: 5 percent

Landform: Ridges

Landform position (two-dimensional): Summit, shoulder

Landform position (three-dimensional): Mountaintop, side slope

Down-slope shape: Convex

Across-slope shape: Convex

Murrill

Percent of map unit: 5 percent

MsB—Morrison very stony sandy loam, 2 to 8 percent slopes

Map Unit Setting

Elevation: 600 to 1,800 feet

Mean annual precipitation: 35 to 50 inches

Mean annual air temperature: 46 to 55 degrees F

Frost-free period: 120 to 180 days

Map Unit Composition

Morrison and similar soils: 90 percent
Minor components: 10 percent

Description of Morrison

Setting

Landform: Ridges
Landform position (two-dimensional): Backslope, summit
Landform position (three-dimensional): Crest, side slope
Down-slope shape: Linear
Across-slope shape: Linear
Parent material: Residuum weathered from limestone and sandstone

Properties and qualities

Slope: 0 to 8 percent
Surface area covered with cobbles, stones or boulders: 1.6 percent
Depth to restrictive feature: 72 to 99 inches
Drainage class: Well drained
Capacity of the most limiting layer to transmit water (Ksat): Moderately high to high
(0.60 to 6.00 in/hr)
Depth to water table: More than 80 inches
Frequency of flooding: None
Frequency of ponding: None
Available water capacity: Moderate (about 6.3 inches)

Interpretive groups

Farmland classification: Not prime farmland
Land capability (nonirrigated): 6s
Hydrologic Soil Group: B

Typical profile

0 to 14 inches: Sandy loam
14 to 53 inches: Sandy loam
53 to 74 inches: Channery sandy loam

Minor Components

Vanderlip

Percent of map unit: 5 percent
Landform: Ridges
Landform position (two-dimensional): Summit, shoulder
Landform position (three-dimensional): Mountaintop, side slope
Down-slope shape: Convex
Across-slope shape: Convex

Murrill

Percent of map unit: 5 percent

MsD—Morrison very stony sandy loam, 8 to 25 percent slopes

Map Unit Setting

Elevation: 600 to 1,800 feet

Mean annual precipitation: 35 to 50 inches

Mean annual air temperature: 46 to 55 degrees F

Frost-free period: 120 to 180 days

Map Unit Composition

Morrison and similar soils: 90 percent

Minor components: 10 percent

Description of Morrison

Setting

Landform: Ridges

Landform position (two-dimensional): Backslope

Landform position (three-dimensional): Crest, side slope

Down-slope shape: Linear

Across-slope shape: Linear

Parent material: Residuum weathered from limestone and sandstone

Properties and qualities

Slope: 8 to 25 percent

Surface area covered with cobbles, stones or boulders: 1.6 percent

Depth to restrictive feature: 72 to 99 inches to lithic bedrock

Drainage class: Well drained

Capacity of the most limiting layer to transmit water (Ksat): Moderately high to high
(0.60 to 6.00 in/hr)

Depth to water table: More than 80 inches

Frequency of flooding: None

Frequency of ponding: None

Available water capacity: Moderate (about 6.3 inches)

Interpretive groups

Farmland classification: Not prime farmland

Land capability (nonirrigated): 6s

Hydrologic Soil Group: B

Typical profile

0 to 14 inches: Sandy loam

14 to 53 inches: Sandy loam

53 to 74 inches: Channery sandy loam

Minor Components

Vanderlip

Percent of map unit: 5 percent

Landform: Ridges

Landform position (two-dimensional): Summit, shoulder

Custom Soil Resource Report

Landform position (three-dimensional): Mountaintop, side slope

Down-slope shape: Convex

Across-slope shape: Convex

Murrill

Percent of map unit: 5 percent